

### LIMITED WARRANTY

The Manufacturer warrants to the original consumer purchaser that this product as manufactured is free from defects in materials and workmanship. For a period of two (2) years from date of purchase by the original consumer purchaser, we will repair or replace, at our option, without charge for parts or labor incurred in replacing parts, any part which we find to be defective due to materials or workmanship. This Warranty is subject to the following limitations and exclusions.

1. This warranty does not apply to the engine, transaxle/transmission components, battery (except as noted below) or components parts thereof. Please refer to the applicable manufacturer's warranty on these items.
2. Transportation charges for the movement of any power equipment unit or attachment are the responsibility of the purchaser. Transportation charges for any parts submitted for replacement under this warranty must be paid by the purchaser unless such return is requested by the manufacturer.
3. Battery Warranty: On products equipped with a Battery, we will replace, without charge to you, any battery which we find to be defective in manufacture, during the first ninety (90) days of ownership. After ninety (90) days, we will exchange the Battery, charging you 1/12 of the price of a new Battery for each full month from the date of the original sale. Battery must be maintained in accordance with the instructions furnished.
4. The Warranty period for any products used for rental or commercial purposes is limited to 45 days from the date of original purchase.
5. This Warranty applies only to products which have been properly assembled, adjusted, operated, and maintained in accordance with the instructions furnished. This Warranty does not apply to any product which has been subjected to alteration, misuse, abuse, improper assembly or installation, delivery damage, or to normal wear of the product.
6. Exclusions: Excluded from this Warranty are belts, blades, blade adapters, normal wear, normal adjustments, standard hardware and normal maintenance.
7. In the event you have a claim under this Warranty, you must return the product to an authorized service dealer.

Should you have any unanswered questions concerning this Warranty, contact:

Poulan Pro  
Customer Service Department  
1030 Stevens Creek Road  
Augusta, GA 30907 USA

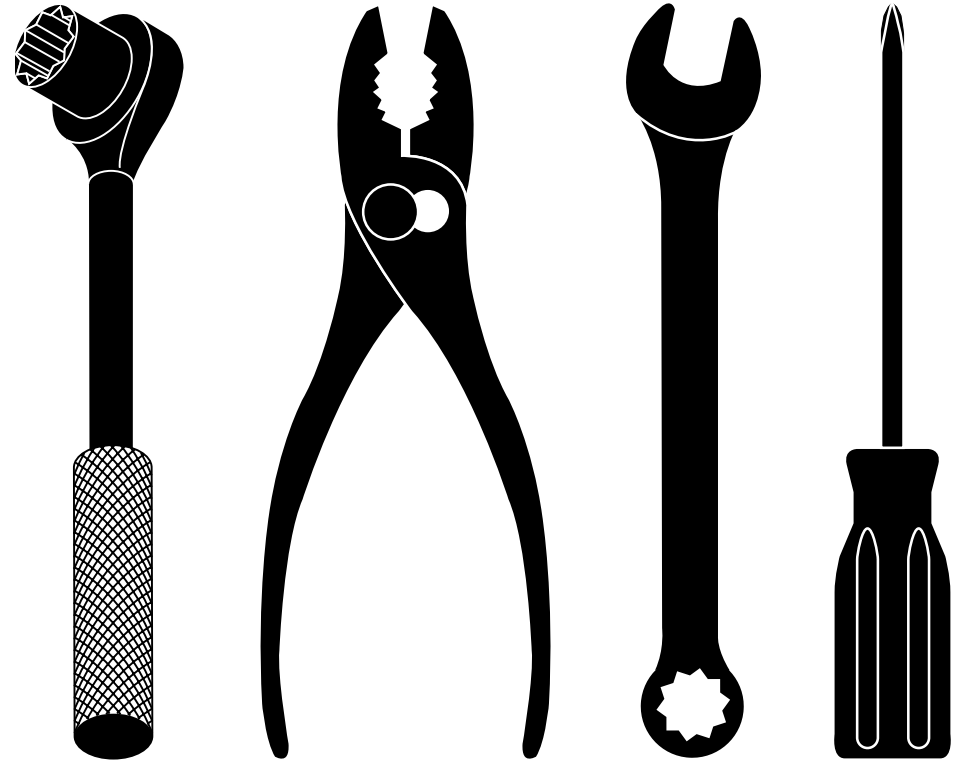
In Canada contact:  
Poulan Pro  
Customer Service Department  
5855 Terry Fox Way  
Mississauga, Ontario L5V 3E4

giving the model number, serial number and date of purchase of your product and the name and address of the authorized dealer from whom it was purchased.

**THIS WARRANTY DOES NOT APPLY TO INCIDENTAL OR CONSEQUENTIAL DAMAGES AND ANY IMPLIED WARRANTIES ARE LIMITED TO THE SAME TIME PERIODS STATED HEREIN FOR OUR EXPRESSED WARRANTIES.**

Some areas do not allow the limitation of consequential damages or limitations of how long an implied Warranty may last, so the above limitations or exclusions may not apply to you. This Warranty gives you specific legal rights, and you may have other rights which vary from locale to locale.

This is a limited Warranty within the meaning of that term as defined in the Magnuson-Moss Act of 1975.



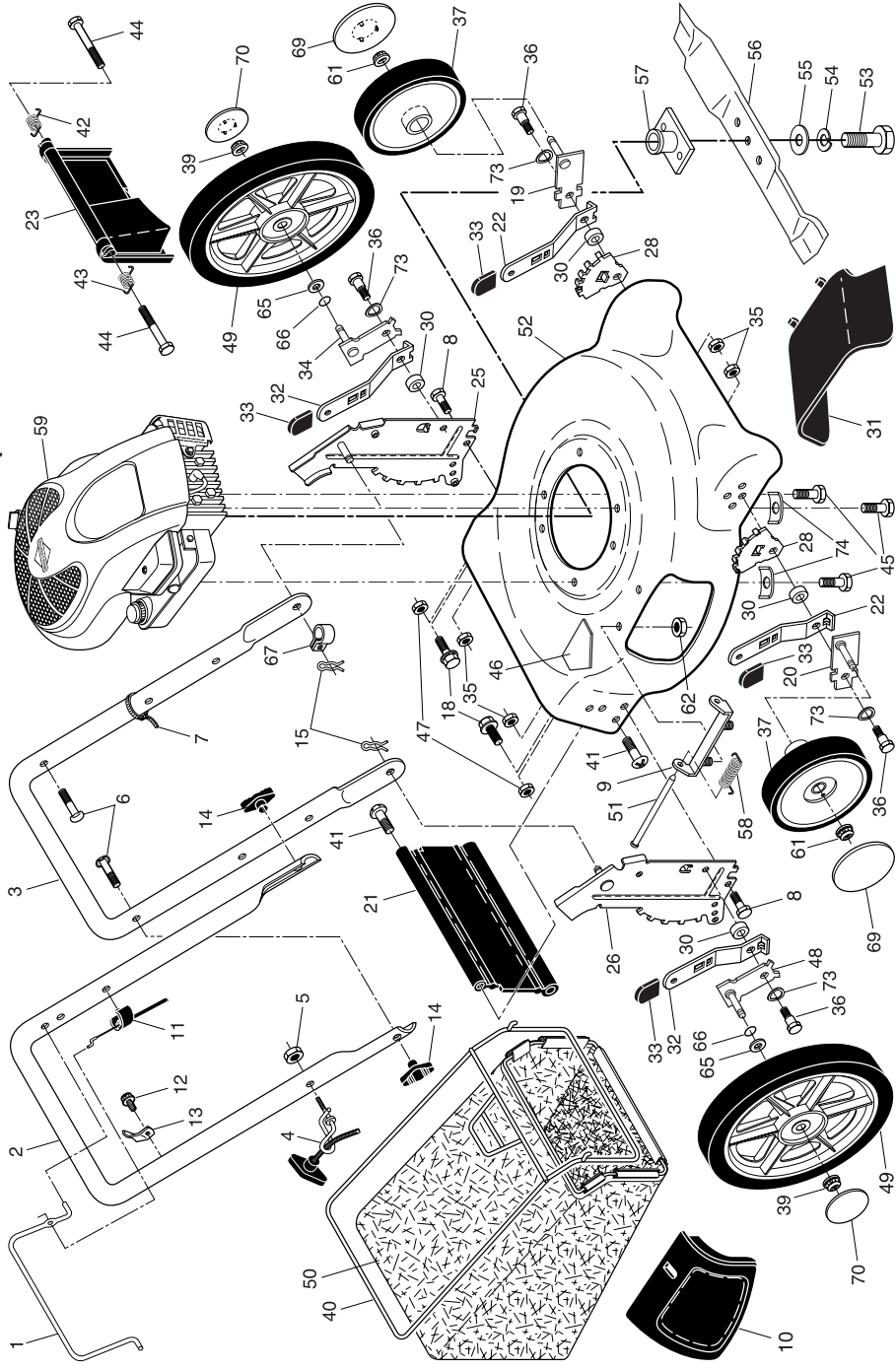
# REPAIR PARTS MANUAL MODEL NO. XT600N21RH (MFG. ID. NO. 96132003200) Rotary Lawn Mower

For Parts and Service, contact our authorized distributor: call 1-800-849-1297  
For Technical Assistance: call 1-800-829-5886

# Poulan PRO

# Poulan PRO

**ROTARY LAWN MOWER -- MODEL NUMBER XT600N21RH (MFG. I.D. NUMBER 96132003200)**



**ROTARY LAWN MOWER -- MODEL NUMBER XT600N21RH (MFG. I.D. NUMBER 96132003200)**

KEY NO.	PART NO.	DESCRIPTION	KEY NO.	PART NO.	DESCRIPTION	KEY NO.	PART NO.	DESCRIPTION
1	194177X428	Control Bar	28	407494X005	Wheel Adjusting Bracket	52	412338	Kit, Lawn Mower Housing (Includes Key Numbers 17, 18 and 46)
2	194179X479	Upper Handle	30	401629	Spacer	53	851084	Hex Head Screw, Grade 8, 3/8-24 x 1-3/8
3	169708X479	Lower Handle	31	165760	Deflector, Discharge	54	850263	Helical Lockwasher
4	194788	Rope Guide	32	401624X004	Selector Spring, Rear	55	851074	Hardened Washer
5	132004	Locknut, Hex 1/4-20	33	701037	Selector Knob	56	406712	21" Blade
6	191574	Handle Bolt	34	401176X004	Axle Arm Assembly, Rear, LH	57	193707	Blade Adapter
7	66426	Wire Tie	35	166785	Locknut, Hex 5/16-18	58	152124	Spring, Hinge Rod
8	74780512	Hex Bolt 5/16-18 x 3/4	36	401638	Shoulder Bolt 5/16-18	59	---	Engine, Briggs & Stratton, Model Number 120T02
9	154132	Mounting Bracket,	37	151155	Wheel & Tire Assembly, Front, 8"			(For engine service and replacement parts, call Briggs & Stratton at 1-800-233-3723)
10	165754	Mulcher Door	39	145212	Flanged Locknut	61	409148	Flanged Locknut
11	183281	Engine Zone Control Cable	40	401808	Frame, Grassbag	62	73800400	Nut, Hex
12	750634	Hex Washer Head Screw #10-24 x 1/2	41	88652	Hinge Screw	65	89348	Washer, Flat 3/8 O-Ring
13	86899X004	Up-Stop Bracket	42	405421	Spring, Rear Door, LH	66	197480	Clip, Cable
14	189713X428	Handle Knob	43	405423	Spring, Rear Door, RH	67	197991	Hubcap, Front Wheel
15	51793	Hairpin Colter	44	184193	Bolt, Rear Door	69	407793X427	Hubcap, Rear Wheel
18	17600406	Screw	45	150406	Rolling Screw 3/8-16 x 1	70	407794X427	Washer, Curved, Cylindrical
19	401174X004	Axle Arm Assembly, Front, LH	46	404763	Danger Decal	74	851201X004	Warning Decal (not shown)
20	401175X004	Axle Arm Assembly, Front, RH	47	751153	Nut, Hex	--	404764	Operator's Manual, English
21	189008	Rear Skirt	48	401177X004	Axle Arm Assembly, Rear, RH	--	193734	Operator's Manual, French
22	401621X004	Selector Spring, Front	49	408852X427	Wheel & Tire Assembly, Rear, 12"	--	412335	Repair Parts Manual
23	401814X428	Rear Door Assembly	50	412336	Grassbag			
24	73930500	Locknut, Hex 5/16-18	51	147286	Rod, Hinge			
25	400627X479	Handle Bracket, LH						
26	400628X479	Handle Bracket, RH						

**NOTE:** All component dimensions given in U.S. inches. 1 inch = 25.4 mm.

**IMPORTANT:** Use only Original Equipment Manufacturer (O.E.M.) replacement parts. Failure to do so could be hazardous, damage your lawn mower and void your warranty.