

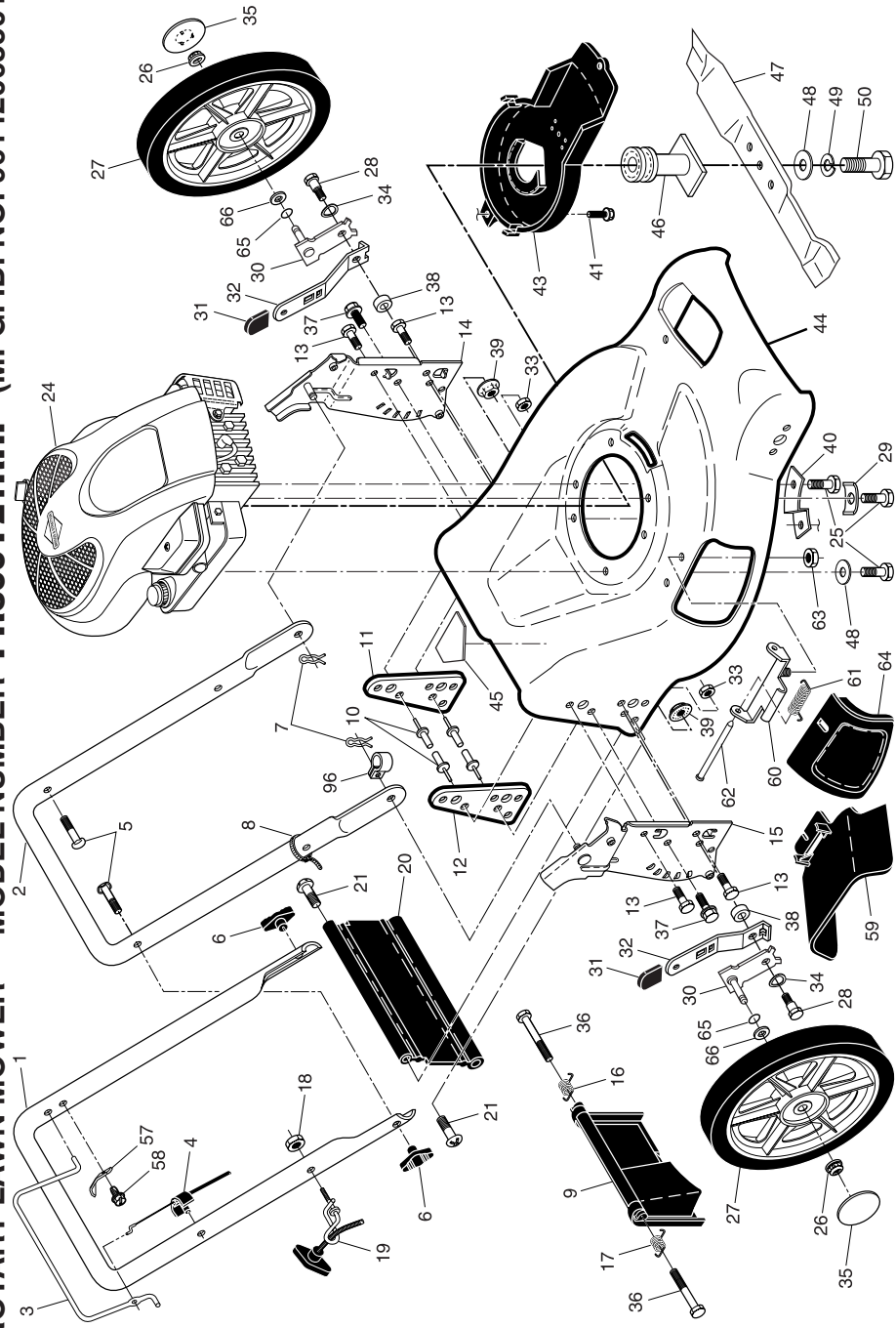
REPAIR PARTS MANUAL
MODEL NO. PR600Y21RHP
(MFG. ID. NO. 96142003501)
Rotary Lawn Mower

For Parts and Service, contact our authorized distributor: call 1-800-849-1297
For Technical Assistance: call 1-800-829-5886

Poulan PRO

Poulan PRO

ROTARY LAWN MOWER -- MODEL NUMBER PR600Y21RHP (MFG. ID. NO. 96142003501)



LIMITED WARRANTY

The Manufacturer warrants to the original consumer purchaser that this product as manufactured is free from defects in materials and workmanship. For a period of two (2) years from date of purchase by the original consumer purchaser, we will repair or replace, at our option, without charge for parts or labor incurred in replacing parts, any part which we find to be defective due to materials or workmanship. This Warranty is subject to the following limitations and exclusions.

1. This warranty does not apply to the engine, transaxle/transmission components, battery (except as noted below) or components parts thereof. Please refer to the applicable manufacturer's warranty on these items.
2. Transportation charges for the movement of any power equipment unit or attachment are the responsibility of the purchaser. Transportation charges for any parts submitted for replacement under this warranty must be paid by the purchaser unless such return is requested by the manufacturer.
3. Battery Warranty: On products equipped with a Battery, we will replace, without charge to you, any battery which we find to be defective in manufacture, during the first ninety (90) days of ownership. After ninety (90) days, we will exchange the Battery, charging you 1/12 of the price of a new Battery for each full month from the date of the original sale. Battery must be maintained in accordance with the instructions furnished.
4. The Warranty period for any products used for rental or commercial purposes is limited to 45 days from the date of original purchase.
5. This Warranty applies only to products which have been properly assembled, adjusted, operated, and maintained in accordance with the instructions furnished. This Warranty does not apply to any product which has been subjected to alteration, misuse, abuse, improper assembly or installation, delivery damage, or to normal wear of the product.
6. Exclusions: Excluded from this Warranty are belts, blades, blade adapters, normal wear, normal adjustments, standard hardware and normal maintenance.
7. In the event you have a claim under this Warranty, you must return the product to an authorized service dealer.

Should you have any unanswered questions concerning this Warranty, contact:

Poulan Pro
Customer Service Department
1030 Stevens Creek Road
Augusta, GA 30907 USA

In Canada contact:
Poulan Pro
Customer Service Department
5855 Terry Fox Way
Mississauga, Ontario L5V 3E4

giving the model number, serial number and date of purchase of your product and the name and address of the authorized dealer from whom it was purchased.

THIS WARRANTY DOES NOT APPLY TO INCIDENTAL OR CONSEQUENTIAL DAMAGES AND ANY IMPLIED WARRANTIES ARE LIMITED TO THE SAME TIME PERIODS STATED HEREIN FOR OUR EXPRESSED WARRANTIES.

Some areas do not allow the limitation of consequential damages or limitations of how long an implied Warranty may last, so the above limitations or exclusions may not apply to you. This Warranty gives you specific legal rights, and you may have other rights which vary from locale to locale.

This is a limited Warranty within the meaning of that term as defined in the Magnuson-Moss Act of 1975.

ROTARY LAWN MOWER - - MODEL NUMBER PR600Y21RHP (MFG. ID. NO. 96142003501)

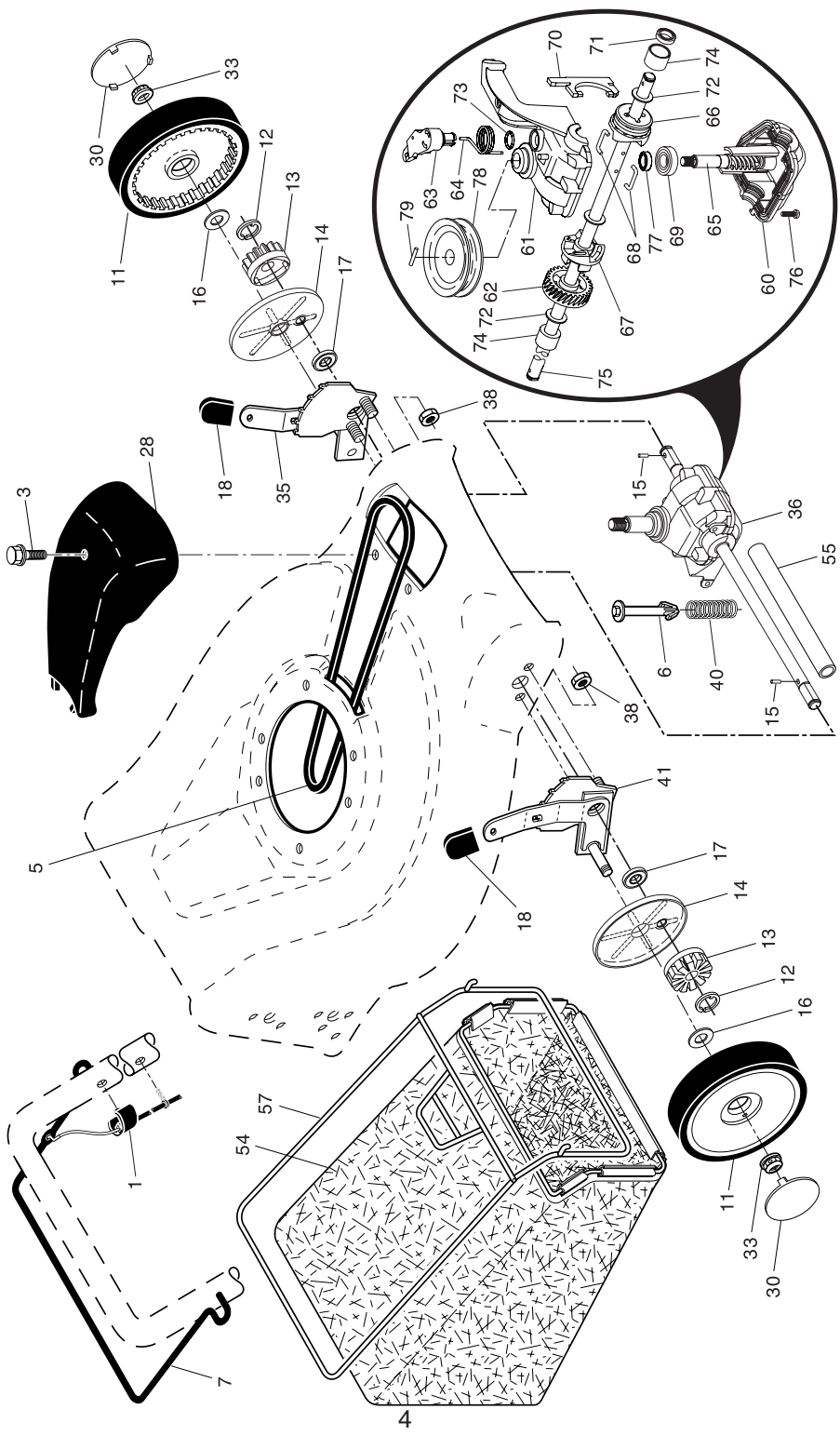
KEY NO.	PART NO.	DESCRIPTION	KEY NO.	PART NO.	DESCRIPTION	KEY NO.	PART NO.	DESCRIPTION	KEY NO.	PART NO.	DESCRIPTION
1	194200X479	Upper Handle	25	150406	Screw, Hex Head,	45	404763	Danger Decal	57	850733X004	Bracket, Upstop
2	151721X479	Lower Handle	26	145212	Threaded, Rolled 3/8-16 x 2	46	189179	Blade Adapter / Pulley	58	750634	Screw
3	194199X421	Control Bar	27	408852X421	Nut, Hex, Flangelock 3/8-16	47	406712	Blade, 21"	59	175071	Discharge Deflector
4	183567	Engine Zone Control Cable	28	401638	Wheel & Tire Assembly,	48	851074	Hardened Washer	60	175735	Hinge Bracket
5	191574	Handle Bolt	29	401630	Rear, 12"	49	850263	Helical Washer 3/8	61	193000	Spring
6	189713X428	Handle Knob	30	401181X004	Bolt, Shoulder 5/16-18	50	851084	Blade Bolt, Hex Head, Grade 8	62	175650	Rod, Hinge
7	51793	Hairpin Cotter	31	701037X421	Axle Arm Assembly, Rear	51	850733X004	Bracket, Upstop	63	73800400	Nut, Hex
8	66426	Wire Tie	32	401626X004	Selector Knob	52	750634	Screw	64	175066	Mulcher Door
9	401812X428	Rear Door Assembly	33	73800500	Selector Spring	53	175071	Discharge Deflector	65	197480	O-Ring
10	128415	Pop Rivet	34	401630	Nut, Hex, Nylock 5/16-18	54	175071	Discharge Deflector	66	88348	Washer, Flat 1/2
11	406573X479	Support Bracket, LH	35	407794X421	Washer, Curved, Cylindrical	55	175071	Discharge Deflector	96	197991	Clip, Cable
12	406574X479	Support Bracket, RH	36	184193	Hubcap	56	193000	Spring	--	404764	Warning Decal (not shown)
13	17060410	Screw 1/4-20 x 5/8	37	74780512	Bolt, Rear Door	62	175650	Rod, Hinge	--	193733	Operator's Manual, English
14	175576X479	Handle Bracket, LH	38	401629	Thread Cutting Screw	63	73800400	Nut, Hex	--	193736	Operator's Manual, French
15	175577X479	Handle Bracket, RH	39	198541	w/Sems 5/16-18 x 3/4	64	175066	Mulcher Door	--	413368	Repair Parts Manual
16	405417	Spring, Rear Door, LH	40	188839X004	Spacer	65	197480	O-Ring			
17	405418	Spring, Rear Door, RH	41	192325	Nut, Hex	66	88348	Washer, Flat 1/2			
18	132004	Keps Locknut 1/4-20	42	405845	Mounting Bracket,	96	197991	Clip, Cable			
19	194788	Rope Guide	43	405845	Debris Shield	--	404764	Warning Decal (not shown)			
20	189005	Rear Skirt	44	407294	Screw, Debris Shield	--	193733	Operator's Manual, English			
21	88652	Hinge Screw 1/4-20 x 1-1/4	45	407294	Debris Shield						
22	---	Engine, Briggs & Stratton,			Kit, Housing (Includes Key						
24	---	Model Number 120T02			Numbers 10, 11, 12 and 45)						

(For engine service and replacement parts, call Briggs & Stratton at 1-800-233-3723)

IMPORTANT: Use only Original Equipment Manufacturer (O.E.M.) replacement parts. Failure to do so could be hazardous, damage your lawn mower and void your warranty.

NOTE: All component dimensions given in U.S. inches. 1 inch = 25.4 mm.

ROTARY LAWN MOWER -- MODEL NUMBER PR600Y21RHP (MFG. ID. NO. 96142003501)



ROTARY LAWN MOWER -- MODEL NUMBER PR600Y21RHP (MFG. ID. NO. 96142003501)

KEY NO.	PART NO.	DESCRIPTION	KEY NO.	PART NO.	DESCRIPTION
1	194653	Drive Control Assembly	55	175739	Driveshaft Cover
3	175262	Pan Head Tapping Screw #10-24 x 2-3/4	57	401802	Frame, Grassbag
5	175436	V-Belt	60	183497	* Case, Lower
6	150495	Retainer, Spring	61	183498	* Case, Upper
7	194185X428	Bar, Drive Control	62	183499	Gear, 27 Teeth
11	180775	Wheel & Tire Assembly, Front, 8"	63	183500	Lever, Clutch
12	12000058	E-Ring	64	183501	Spring, Return
13	403849	Pinion, Gear	65	183502	Shaft, Input
14	189403	Dust Cover	66	183503	Dog, Movable
15	191017	Pawl, Drive	67	183504	Dog, Fixed
16	67725	Washer 1/2 x 1-1/2 x .134	68	183505	Wire, Formed
17	191039	Bearing, Wheel Adjuster	69	183506	Bearing, Ball
18	701037X421	Selector Knob	70	183507	Fork, Shift
28	194404X428	Drive Cover	71	183508	Seal, Output Shaft
30	407793X421	Hubcap	72	183509	Washer
33	83923	Locknut	73	183510	Seal, Case
35	408802	Kit, Wheel Adjuster, LH (Includes Knob and Bearing)	74	183511	Bushing
36	199205	Gear Case Assembly, Complete	75	196613	Shaft, Output
38	73800400	Locknut 1/4-20	76	183513	Screw
40	137090	Spring	77	183514	Seal, Input Shaft
41	408803	Kit, Wheel Adjuster, RH (Includes Knob and Bearing)	78	199852	Drive Pulley
54	411063	Grassbag Assembly	79	199419	Pin, Retainer

* Use Dow Corning #709 to reseal Gear Case Halves.

IMPORTANT: Use only Original Equipment Manufacturer (O.E.M.) replacement parts. Failure to do so could be hazardous, damage your lawn mower and void your warranty.
NOTE: All component dimensions given in U.S. inches. 1 inch = 25.4 mm.