

SB, Fuel Line Contact with Drive Belt, PoulanPro Tractors, PB20A46YT, P20VA46, 10-2017

<input checked="" type="checkbox"/> Action Required:	<input checked="" type="checkbox"/> Sold	<input checked="" type="checkbox"/> Not Sold
<input type="checkbox"/> Only If Encountered		
<input type="checkbox"/> Information Only		

Affected models

Model	PNC	Serial Range Start	Serial Range End
PB20A46YT	960480076	022615A001311	030315A001500
PP20VA46	960480092	120915A001001	120716D001655

Affected market(s)

Canada and United States

Description

Incorrect routing of the fuel line can potentially result in contact between the fuel line and the drive belt. Contact may result in rubbing and abrasion of the fuel line, which creates the potential for leakage of fuel.

Action

Product sold to end users:	Service is required
Residual inventory not yet sold:	Service is required
Service description:	Service includes rerouting of fuel line. If fuel line shows evidence of abrasion, replacement of fuel line is required.

Parts Information

Replacement Part Number	Part description	Old part no.
587044660, quantity 1	Fuel Line	N/A
532123487, quantity 1	Fuel Line Clamp	N/A

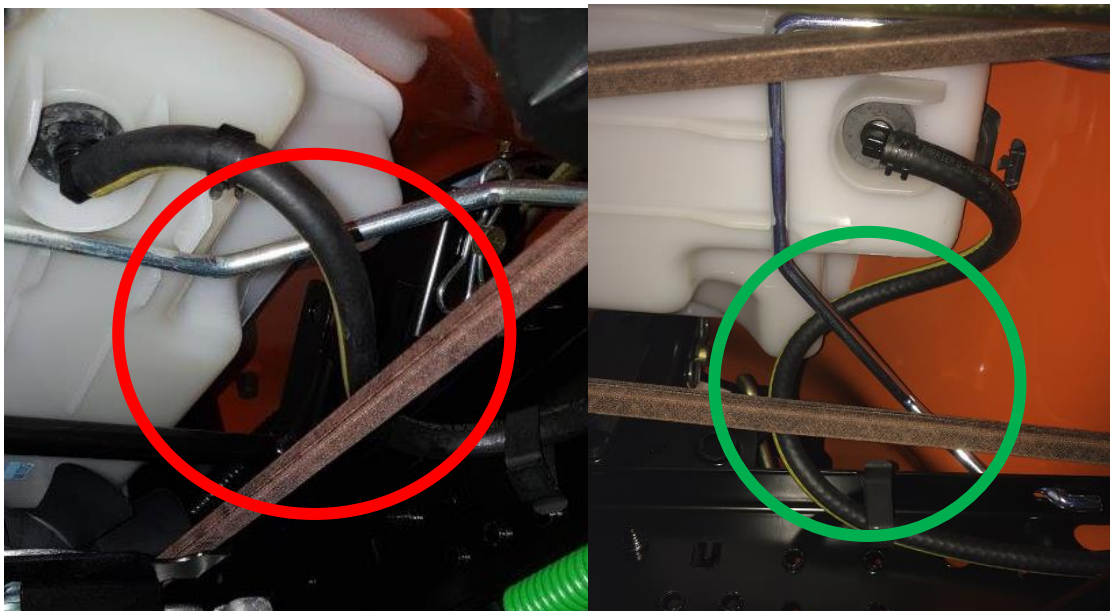
Information for Warranty reporting

Normal warranty rules apply; service must be performed through our warranty process using only the codes and text listed below:

Component code:	173 – Hose
Defect code:	92 – Part exchanged on request by Husqvarna
Warranty code (inventory):	04 – Requested by Factory
Warranty code (end users):	01 – Warranty
Warranty report text:	Service Bulletin # B170049A-14
Time units (6 minutes):	4 units (24 minutes)

Instructions for Service:

Step 1. Using a flashlight, check the position of the fuel line. The picture on the left shows incorrect routing where fuel line is in front of the silver tank support (red circle). The picture on the right shows the correct routing where fuel line is behind the silver tank support (green circle).



Step 2. Check fuel line for damage. If any damage is observed, replace fuel line component.

Note: If fuel line has no damage and routing is correct, no further service is required.

Step 3. If routing is incorrect, disconnect fuel line from fuel tank. Route fuel line behind silver tank support and reconnect to tank. Check that the fuel line clamp is in the correct position.

Step 4. Upon completion of inspection and service, mark the unit with a green dot label and the number "17-17". If the unit is still in the crate, add label to outer packaging label. If no longer in crate, add label to upper right corner of the serial number plate.